

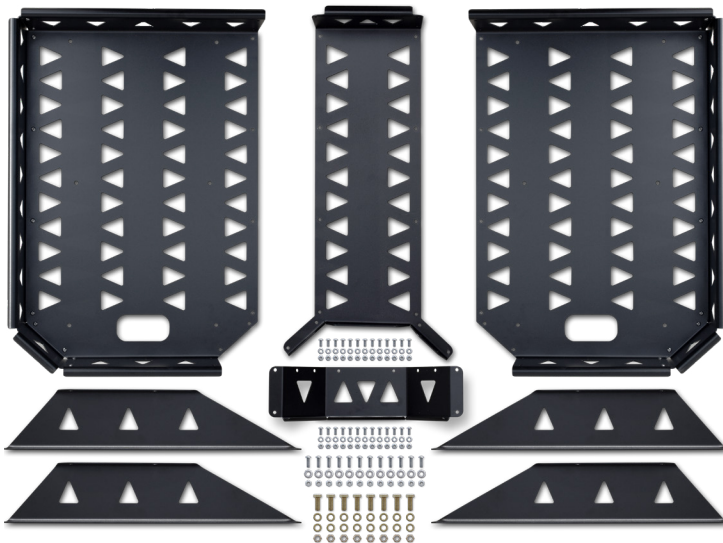
# RZR XP DOUBLE SEAT CARGO RACK

DOCUMENT: P1-41-220B\_INST.PDF • LAST UPDATED: JUNE 2020

Thank you for purchasing this item from **CSD Racing Products!** Please read through this entire document before proceeding with installation. If you are not confident in your mechanical skills, please seek the help of a professional to perform the installation. Check your packages immediately upon arrival to ensure that everything listed is included, and to check for damage during shipping.

## APPLICATIONS

These installation instructions apply to the following CSD Racing Products:



**P1-41-220B** RZR XP Double Seat Cargo Rack

## INCLUDED COMPONENTS

Please check your packages immediately upon arrival to ensure that everything listed is included, and to check for damage during shipping. If anything is missing or damaged, contact CSD Racing Products.

- 1 LH SEAT CARGO RACK (PRE-ASSEMBLED)
- 1 RH SEAT CARGO RACK (PRE-ASSEMBLED)
- 2 LH CARGO RACK MOUNT BRACKET
- 2 RH CARGO RACK MOUNT BRACKET
- 1 DOUBLE CARGO RACK BRIDGE SECTION
- 1 DOUBLE CARGO RACK BRIDGE END CAP
- PRE-INSTALLED HARDWARE:**
- 20 #10-32 X 1/2 SS BUTTON HEAD CAP SCREW
- 20 #10-32 SS NYLON INSERT LOCK NUT
- 20 #10 FLAT WASHER

## HARDWARE KIT

- 8 3/8-24 X 1 GR8 HEX HEAD CAP SCREW
- 8 3/8-24 GR8 NYLON INSERT LOCK NUT
- 16 3/8 AN FLAT WASHER
- 12 1/4-28 X 3/4 SS BUTTON HEAD CAP SCREW
- 12 1/4 SS FLAT WASHER

- 12 1/4-28 SS NYLON INSERT LOCK NUT
- 26 #10-32 X 1/2 SS BUTTON HEAD CAP SCREW
- 26 #10-32 SS NYLON INSERT LOCK NUT
- 26 #10 SS FLAT WASHER

## TOOLS NEEDED

- Ratchet or Driver
- Torx T27 Driver Bit
- 1/8 & 5/32 Hex Key or Driver Bit
- 3/8, 7/16 & 9/16 Socket or Wrench

## INSTALLATION PROCEDURE

1. **Secure the vehicle and wear safety gear.** Park the vehicle on a flat, level surface and set the parking brake. Wear safety glasses from this point forward.
2. **Remove the rear seats from the vehicle.** Your RZR XP 4-Seat UTV's two rear seats are easily removable. Reach behind the seat to release the latch, and lift the seat out of the vehicle. If necessary, refer to the vehicle User Manual for further instructions on removing the seat.
3. **(Optional) Remove the OE Seat Mounts from the Seats.** The Seat Cargo Rack attaches to the seat mount in order to utilize the same convenient one-latch install and removal procedure the seats have. The Cargo Rack is designed to attach to either the OE (stock) seat mounts or to CSD Racing's Steel Seat Mounts. If you will be using the OE Seat Mounts, use a Torx T27 driver bit to remove the four bolts, and then remove the seat mounts.

**ABOUT SEAT MOUNTS.** You have a choice between using the RZR's original stock seat mounts or CSD's heavy duty RZR Steel Seat Mounts (part number P1-43-210B, sold separately). We of course recommend the CSD mounts for strength and durability, but the rack is designed to work with the plastic OE mounts as well. If you will be alternating between running the seats and this Cargo Rack on different trips, it might be more convenient for each item (the seats and the Cargo Rack) to have its own seat mount so you're not having to move the mount from item to item. If you choose to purchase a CSD Steel Seat Mount as your additional mount, we recommend using it mount the seat, and use the stock plastic mount for this rack.

4. **Attach the Cargo Rack Mount Brackets to the Seat Mounts.** Use a 9/16 socket and wrench, with

the supplied 3/8-24 X 1 GR8 HEX HEAD CAP SCREWS, 3/8-24 GR8 NYLON INSERT LOCK NUTS and 3/8 AN FLAT WASHERS to fasten the Cargo Rack Mount Brackets to either the OE Seat Mounts or CSD Racing Steel Seat Mounts. Orient the Mount Brackets so that the flanges with the bolt holes are pointed inward, toward the center of the seat mount, with the long, sharper angled end pointed in the direction of the front of the seat mount. The shorter angled end will be toward the rear. See Figure 1 for reference. Do not fully tighten these fasteners yet; just leave them finger-tight.

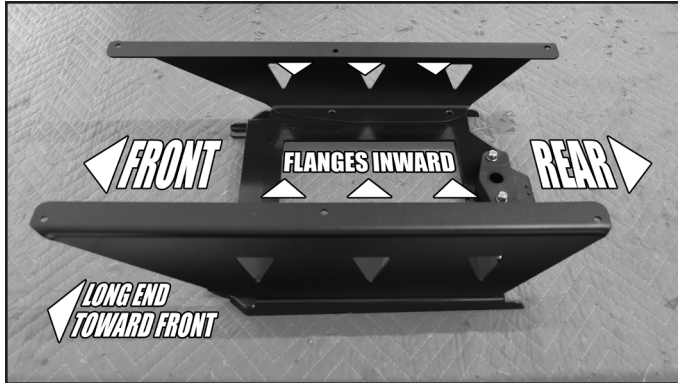


Figure 1.

- 5. Attach the Cargo Rack to the Mount Brackets.** Place the pre-assembled Seat Cargo Rack on to the Mount Brackets (which were attached to the seat mounts in the previous step). Make sure that the end of the Cargo Rack with the 45° beveled corners is oriented toward the rear of the Seat Mount. Align the six (6) bolt holes in the floor of the Cargo Rack with the corresponding holes in the upper flange of the Mount Brackets. Use the supplied 1/4-28 X 3/4 SS BUTTON HEAD CAP SCREWS, 1/4 SS FLAT WASHERS and 1/4-28 SS NYLON INSERT LOCK NUTS to attach the Cargo Rack to the Mount Brackets, making sure that the button heads are on top. Snug the fasteners with a 5/32 hex key or driver and 7/16 socket or wrench, but do not fully tighten them yet. Repeat the procedure for the other Cargo Rack.
- 6. Assemble the Bridge Section.** Place the two partially assembled Cargo Rack assemblies on to a padded work surface, with their open sides facing each other, and spaced about 6 inches apart. Place the DOUBLE CARGO RACK BRIDGE SECTION against the underside of two Cargo Racks. Note that the floor of the Cargo Rack will overlap the Bridge Section where fasteners are installed.

Use the supplied #10-32 X 1/2 SS BUTTON HEAD CAP SCREWS with #10 SS FLAT WASHERS and #10-32 SS NYLON INSERT LOCK

NUTS to attach the Bridge Section to both of the Cargo Racks. The Bridge Section will under-lap the Cargo Racks, meaning its surface will sit underneath the surface of the Cargo Rack on either side, as shown in Figure 2, with the fasteners passing through both pieces.

When installing the hardware into each location, pass the screw through each hole, from the top, so that the button head is on the top/interior surface of the Cargo Rack. Install the washer and lock nut on to the other end of the fastener, on the bottom side of the assembly. Only finger-tighten each fastener until all fasteners are installed. Leaving them loose will make it easier to align the remaining bolt holes in the assembly.

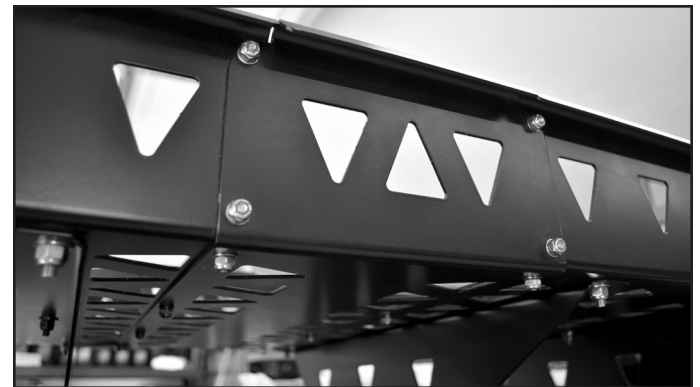


Figure 2.

Once all of the #10 fasteners have been installed, Snug them up with a 5/32 hex key or driver and 7/16 socket or wrench, but do not tighten them yet.

- 7. Install the Bridge End Cap.** The Bridge End Cap ties all of the components together as shown in Figure 3. It installed on the inside of the flanges on the Bridge Section, but outside of the outer walls of the two Cargo Rack sections. It may be necessary to re-loosen some of the Bridge Section bolts in order to slip the End Cap into place. Use the remaining #10-32 X 1/2 SS BUTTON HEAD CAP SCREWS with #10 SS FLAT WASHERS and #10-32 SS NYLON INSERT LOCK NUTS to fasten the End Cap to each of its adjacent components. Continue to orient the hardware so that the round button heads are on the interior of the Cargo Rack, with the washer and lock nut on the exterior.

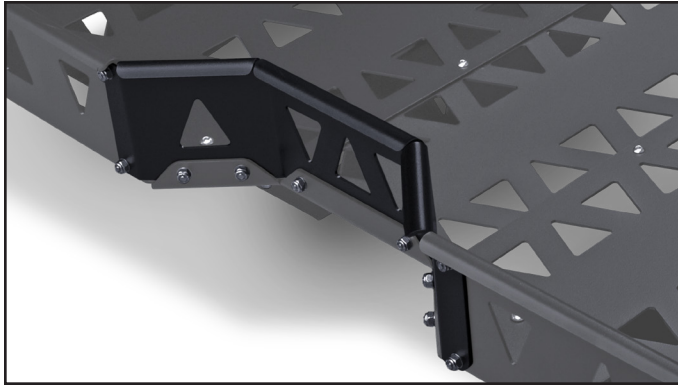


Figure 3.

**8. Install the Cargo Rack into the Vehicle.** With help from a friend, lift the assembled Cargo Rack and place it into the RZR's rear seat area, locking it into the seat mount latches as if you were re-installing the seats, but both of them simultaneously. Some adjustments may be necessary, which is why we have not fully-tightened all of the fasteners yet.

**9. Tighten All Fasteners.** After the Cargo Rack is installed, go back over the entire assembly and tighten each fastener as you go.

*Congratulations! You have completed the installation of the CSD Racing Products RZR XP Double Seat Cargo Rack! Keep reading for important information from CSD Racing Products, and keep these instructions for future reference.*



**CSD RACING PRODUCTS - 5-YEAR LIMITED WARRANTY**

*Items manufactured and sold by CSD Racing Products (hereinafter "CSD") are covered under a 5-year warranty against manufacturing defects and workmanship. This Warranty applies to the CSD-manufactured structural components ONLY.*

*For a period of 5 years from the retail purchase date, CSD warrants to the original retail purchaser that its products are free from defects in material and workmanship. All other warranties and representations, expressed or implied,*

*are hereby disclaimed, including fitness for merchantability and buyer's intended use or purpose. Buyer assumes all risks as to the selection, suitability and performance of all CSD products purchased. This limited warranty does not cover damage or impairment in any part due to misuse or use in racing or other forms of competition, improper installation, accident or contact with on-road or off-road hazards, product modification, improper or inadequate cleaning and/or maintenance. Product purchased "used" or "open box" are not covered under warranty. CSD is not responsible for items damaged during shipping. This warranty is not transferable from the original buyer.*

*CSD's 5-Year Limited Warranty covers CSD-manufactured structural components only. It does not cover paint or powder coat finish, electrical and wiring products, or any other components or processes performed by secondary vendors.*

*For the original Buyer to be eligible for the limited warranty coverage, the Buyer must provide proof of purchase. Customer's remedy hereunder shall be limited only to repair or replacement (at CSD's option) of any defective part(s) returned to CSD at customer's expense. The determination of whether or not a returned part is defective or subject to coverage under the limited warranties stated herein shall be made at CSD's sole discretion.*

*This Warranty does not apply to items manufactured by other companies and sold by CSD, individually or as part of a kit or assembly. Such items are covered only under their respective manufacturer's Warranty. Remedies under other manufacturers' warranties should be pursued directly with the manufacturer.*

*To file a Warranty Claim, please contact CSD via email at [pitcrew@csdracingproducts.com](mailto:pitcrew@csdracingproducts.com) to request a warranty claim form.*